

### FEATURES

- Solenoid valves satisfy all relevant EC directives
- Solenoid valve Manual Reset function which means that the valve has to be energized as well as manually operated before it stays in the "latched" position. The No Voltage Release function will make sure that the valve trips if de-energized
- Brass and stainless steel balanced poppet pressure valves with full flow capacity (Ø 9 mm)
- Valves are especially suited for heavy duty industrial applications
- The solenoids conform to European standards **EN 50014** and **EN 50018** EEx d, with direct cable entry M20 x 1,5 mm

### GENERAL

Differential pressure 0 - 10 bar [1 bar = 100kPa]  
 Maximum viscosity 65 cSt (mm<sup>2</sup>/s)  
 Response times 75 - 100 ms

fluids (*)	temperature range (TS)	seal materials (*)
air, inert gas, water, oil	-38 to +50°C	NBR (nitrile)

### MATERIALS IN CONTACT WITH FLUID

(\*) Ensure that the compatibility of the fluids in contact with the materials is verified

	Brass body	Stainless steel body
Body	Brass	AISI 316 SS
Core tube	Stainless steel	Stainless steel
Core and plugnut	Stainless steel	Stainless steel
Core spring	Stainless steel	Stainless steel
Poppet stem	Stainless steel	Stainless steel
Seals	NBR	NBR
Poppets	NBR	NBR
Seats	Brass	Stainless steel
Shading coil	Copper	Silver

### OTHER MATERIALS

Electrical enclosure Cast iron Cast iron or stainless steel

### ELECTRICAL CHARACTERISTICS

Coil insulation class F  
 Connection Screw terminals  
 Standard voltages DC (=) 24V  
 AC (~) 24V - 115V - 230V/50Hz  
 AC (~) 24V - 120V - 240V/60Hz

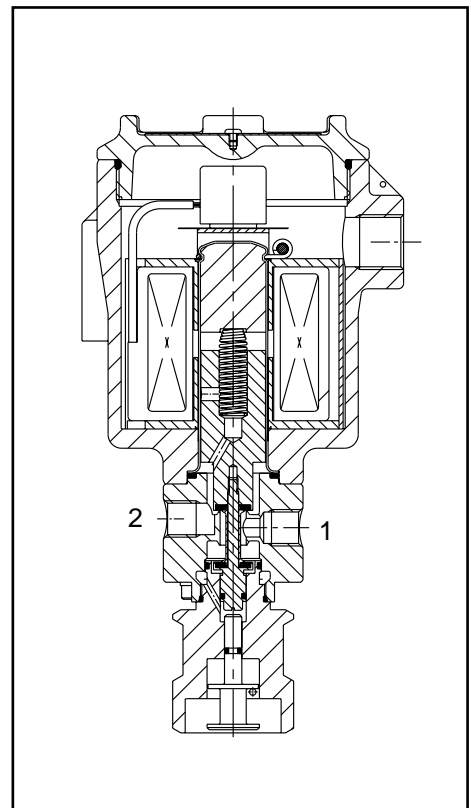
coil type	nominal power ratings				ambient temperature range (TS) (°C)	safety code
	inrush ~ (VA)	holding ~ (W)		hot/cold = (W)		
		(VA)	(W)			
M25-F	14,2	14,2	14,2 *	-	-38 to +50	EEx d IIC T4
M25-F	-	-	-	8,2 / 10	-38 to +50	EEx d IIC T5

### SPECIFICATIONS

pipe size	orifice size (mm)	flow coefficient Kv (m <sup>3</sup> /h) (l/min)		operating pressure differential (bar)				coil type		catalogue number (1)			
				maximum (PS)						brass body cast iron enclosure	stainless steel body		
				air (*)		water/oil (*)					cast iron enclosure	stainless steel enclosure	
NPT	(mm)	(m <sup>3</sup> /h)	(l/min)	min.	~	=	~	=	~	=			
1/4	9	0,68	11,3	0	10	10	10	10	M25-F	M25-F	NBB307C019	NBB307C009	NAB307C009
3/8	9	0,68	11,3	0	10	10	10	10	M25-F	M25-F	NBB307C049	NBB307C039	NAB307C039
1/2	9	0,68	11,3	0	10	10	10	10	M25-F	M25-F	NBB307C079	NBB307C069	NAB307C069

(\*) Rectified coil.

(1) With solenoid EEx d type NB / NA - coil M25.



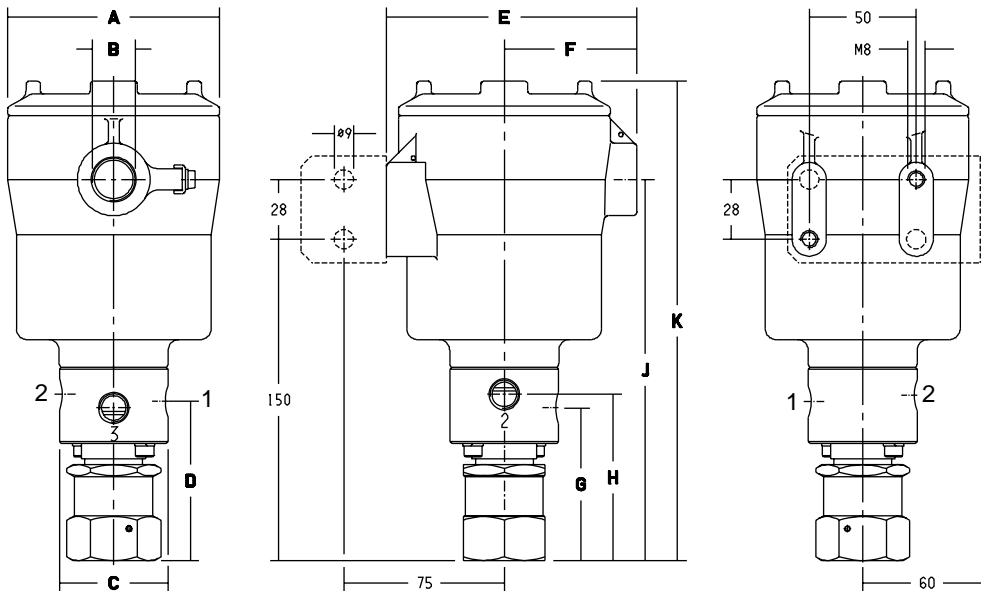
### OPTIONS

- FPM (fluorelastomer) seals. Add optional suffix **V** to the catalogue number
- Mounting brackets
- Voltage suppressors are available on DC construction

### INSTALLATION

- The solenoid valves must be **mounted vertical and in an upright position**
- Two mounting holes are provided in the solenoid head
- Pipe connection identifiers are: B = NPT (ANSI 1.20.3)
- The third digit in the catalogue number indicates the standard pipe connection
- Other pipe threads are available on request
- Installation/maintenance instructions are included with each valve
- Spare Parts Kit and replacement coils are available

### DIMENSIONS (mm), WEIGHT (kg)



catalogue number B307	A	B	C	D	E	F	G	H	J	K	weight
C009 - C019	99	M20	51	75	117	55	71	78	178	226	5,2
C039 - C049	99	M20	51	75	117	55	71	78	178	226	5,2
C069 - C079	99	M20	51	75	117	55	75	75	178	226	5,2